

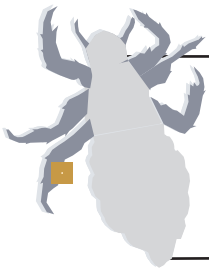
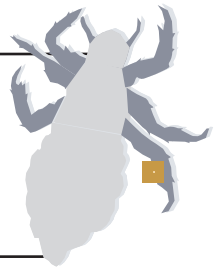
# Head Lice Pie

A survey was carried out in four primary schools to find out :

how many pupils had head lice at the time of the survey;  
how many pupils had head lice in the past but no longer had any.  
These are the results of the findings.

## Abbot's Wood Primary School

Total number of pupils in the school - 120  
10% of pupils had head lice at the time of the survey  
15% of pupils had had head lice in the past

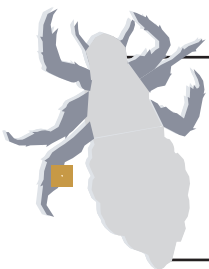
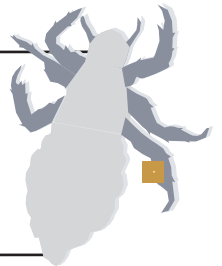


## Harper Lane Primary School

Total number of pupils in the school - 200  
5% of pupils had head lice at the time of the survey  
2% of pupils had had head lice in the past

## Penrose Primary School

Total number of pupils in the school - 250  
1% of pupils had head lice at the time of the survey  
30% of pupils had had head lice in the past



## Yellow Close Primary School

Total number of pupils in the school - 50  
50% of pupils had head lice at the time of the survey  
2% of pupils had had head lice in the past

Draw a table to show the number of pupils in each of the schools who had head lice at the time of the survey.

Draw a pie chart to show the total percentage of children in each school who either had head lice at the time of the survey or had had them in the past.

Draw a bar chart to compare in each school the numbers of pupils who had head lice at the time of the survey with those who had had head lice in the past.

